



# MONTHLY MEMBERSHIP PROGRESS REPORT

District 2 A1

Results as of: 11/30/2016

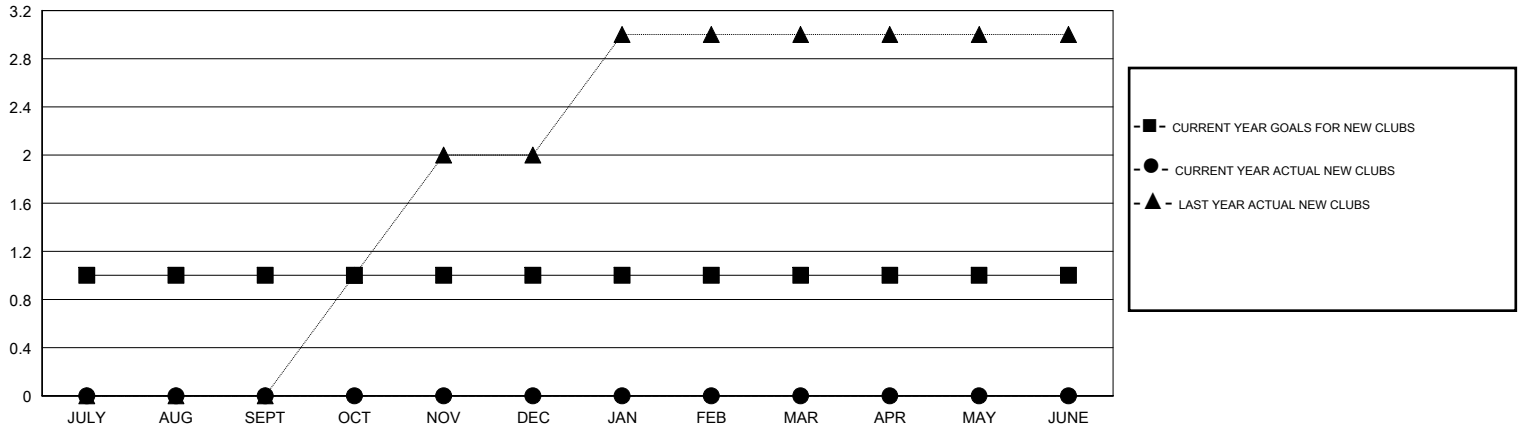
GMT: HAL GRIFFIN

LOCATION TEXAS

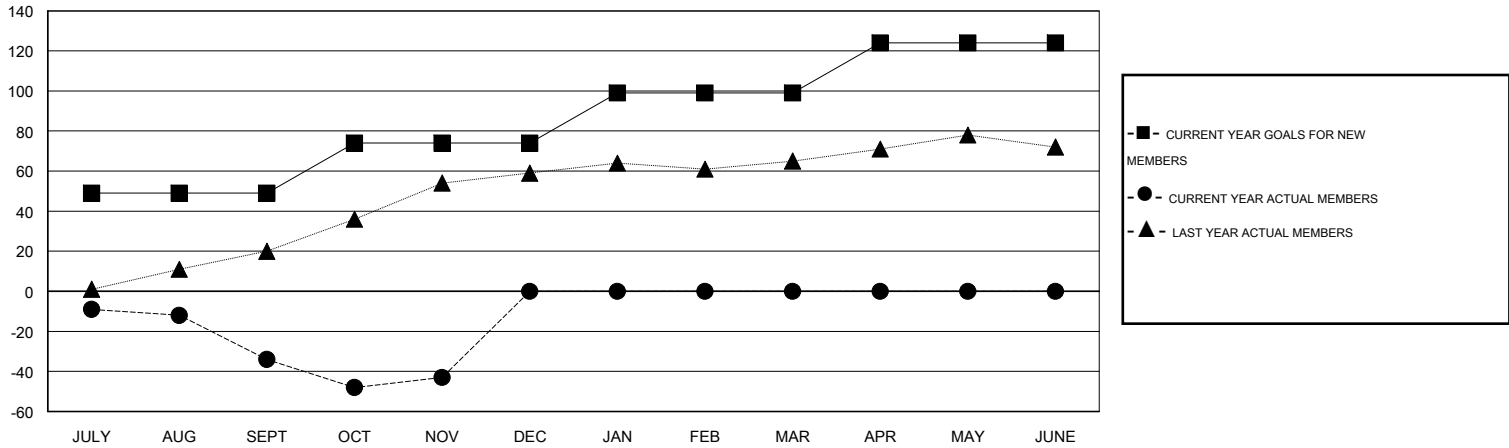
GMT CA 1

Clubs					Members				
RESULTS FOR 2016-2017					RESULTS FOR 2016-2017				
QUARTER	NEW CLUB GOAL	NEW CLUBS	DROPPED CLUBS	NET GAIN/LOSS	QUARTER	NEW MEMBER GOAL	CHARTER AND NEW MEMBERS ADDED	DROPPED MEMBERS	NET GAIN/LOSS
JULY/AUG/SEPT	1	0	0	0	JULY/AUG/SEPT	49	48	82	-34
OCT/NOV/DEC	0	0	0	0	OCT/NOV/DEC	25	26	35	-9
JAN/FEB/MAR	0	0	0	0	JAN/FEB/MAR	25	0	0	0
APR/MAY/JUNE	0	0	0	0	APR/MAY/JUNE	25	0	0	0

GOALS AND ACTUAL NEW CLUBS CUMULATIVE



GOALS AND ACTUAL MEMBERS CUMULATIVE



DROPPED CLUBS: 0	28 CLUBS OF 49 ADDED 1 OR MORE NEW MEMBERS	<u>GENDER DISTRIBUTION</u>	
<u>DROPPED MEMBERS</u>		MALE	924 (71.19%)
DECEASED	9	FEMALE	374 (28.81%)
CLUB CANCELLED	0	<u>FAMILY UNIT MEMBERS</u> 163	
OTHER	108	<u>HEAD OF HOUSEHOLD</u> 80	
<b>TOTAL</b>	<b>117</b>	<u>NON-HEAD OF HOUSEHOLD</u> 83	

[CLICK HERE FOR HEALTH ASSESSMENT DATA](#)